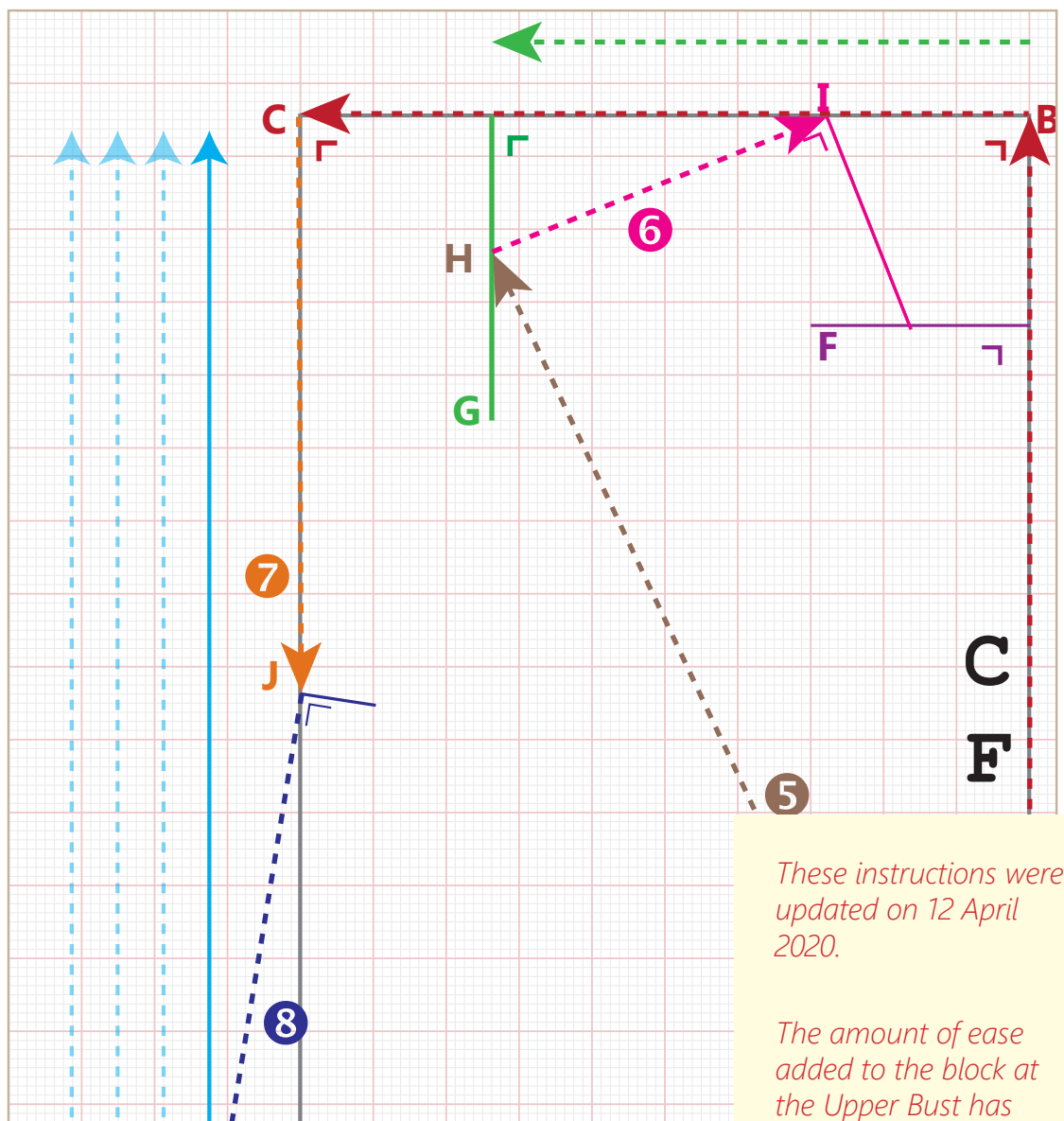


Instructions: Bodice Block

1-Dart FRONT



5-page Condensed



These instructions were updated on 12 April 2020.

The amount of ease added to the block at the Upper Bust has been changed.

FIGURE 1:

- 1 **FULL LENGTH FRONT**, from A to B. **BUST ARC**: from B to C (Bust divided by 4 + 1.25 inches ease). Finish the rectangle, placing points C & D.
- 2 **BUST-CUP LINE**: Draw a line parallel to C & D: B-bust cup = 1.25 inches C = 1.88 inches, D = 2.5 inches, DD=3.14 - away from the D-C line.
- 3 **CENTRE FRONT LENGTH**: Measure up from A on the A-B line, draw a line at right angles to the A-B line - mark it F.
- 4 **ACROSS SHOULDER**: Measure across from B on the B-C line. Draw a line down at right angles, mark it G.
- 5 **SHOULDER SLOPE**: Measure up from A to meet line G, mark it H.
- 6 **SHOULDER LENGTH**: Measure from the Shoulder Slope point H to meet the B-C line, name it I.
- 7 **FRONT ARMHOLE DEPTH**: Measure down from C on the C~D line, label the end point J.
- 8 **SIDE LENGTH**: From point J to meet the Bust-cup line E.

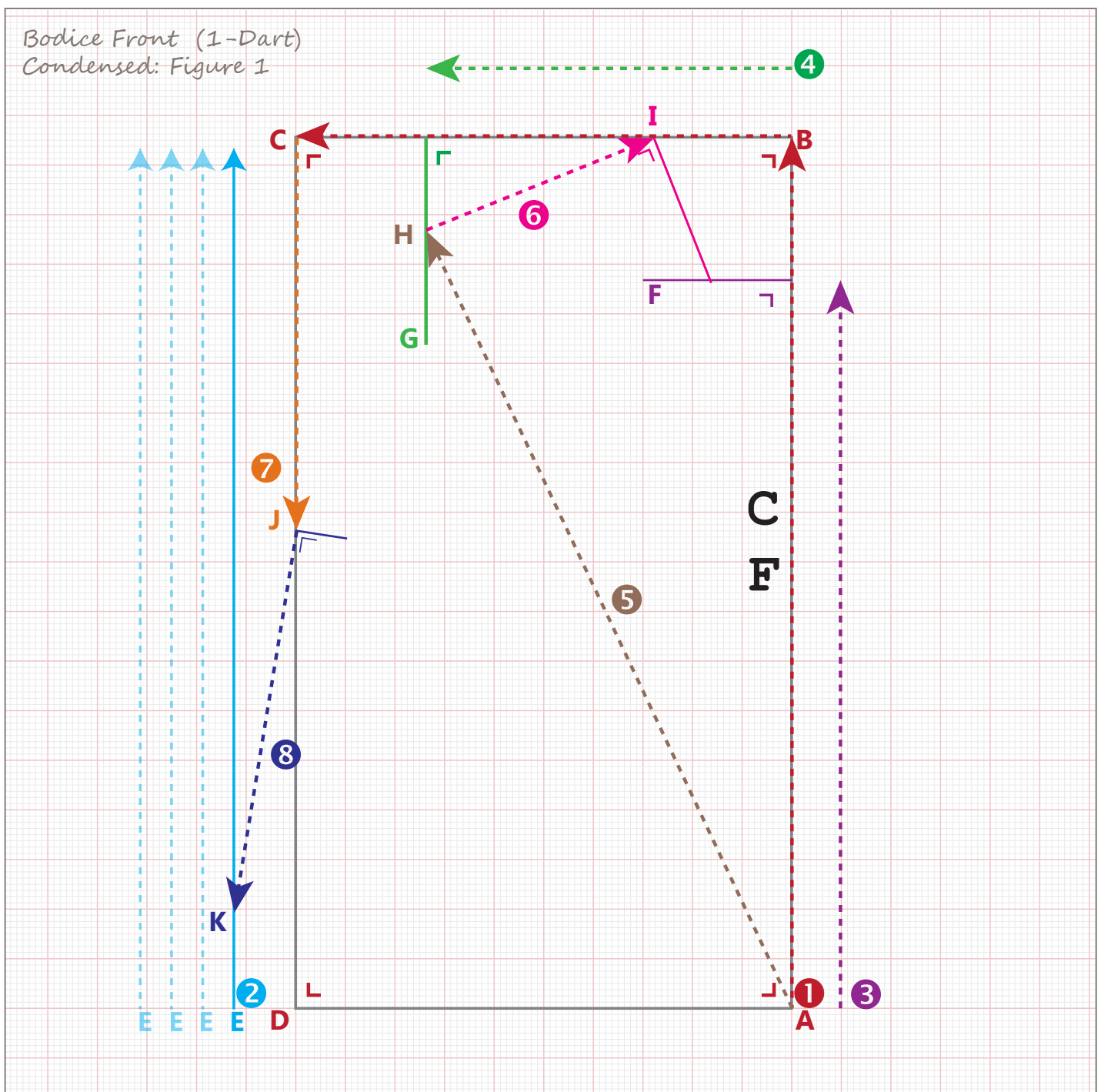


FIGURE 2:

- 9 **BUST DEPTH:** Measure down from H on the H-A line. Mark this point.
- 10 **BUST SPAN:** Measure from the Centre Front Line at right angles to the Bust Depth Point you just made. Mark this the **BUST POINT** (the small black circle in the image).
- 11 **ACROSS CHEST PLACEMENT:** One-third of the measurement from the neckline (F line) to the Bust Span line that ends in the Dart Point. Mark this point L.
- 12 **ACROSS CHEST:** Measure from L (at right angles to the A-B line) and mark this M.
- 13 **DART PLACEMENT:** Measure from A on the A-D line, make a mark. Then measure down at right angles 3/16 of an inch. Mark this N.
- 14 **SIDE SEAM TO (DART PLACEMENT) LINE:** Draw a line from K to N. This is a guide line.
- 15 **WAIST REMAINDER:** Measure on the K-N guide line. Mark this point O.
- 16 **DART LEGS:** Draw a dart leg from the Dart Point to N. Measure this and then draw the other dart leg the same length to meet or go through the point O.

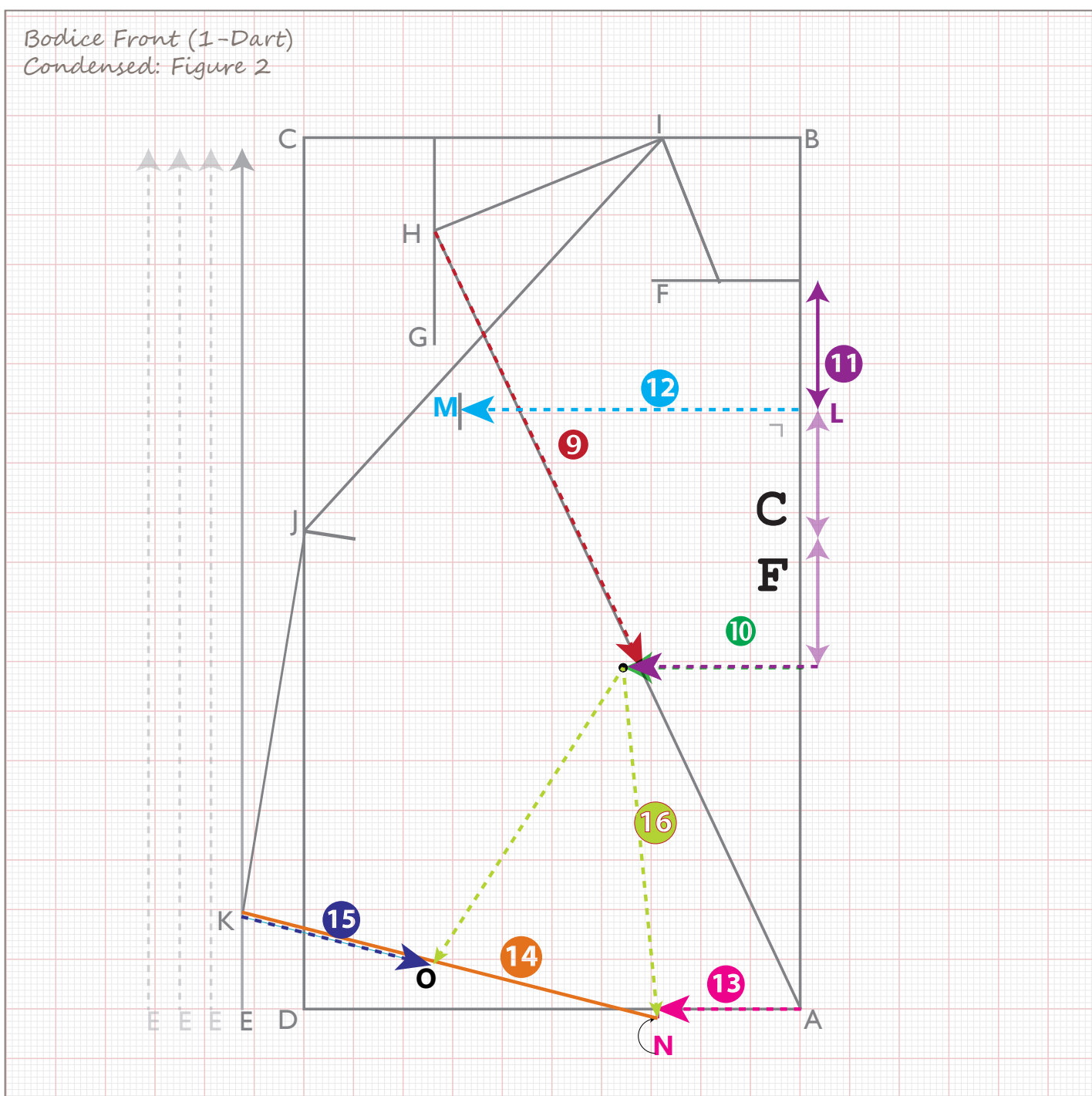
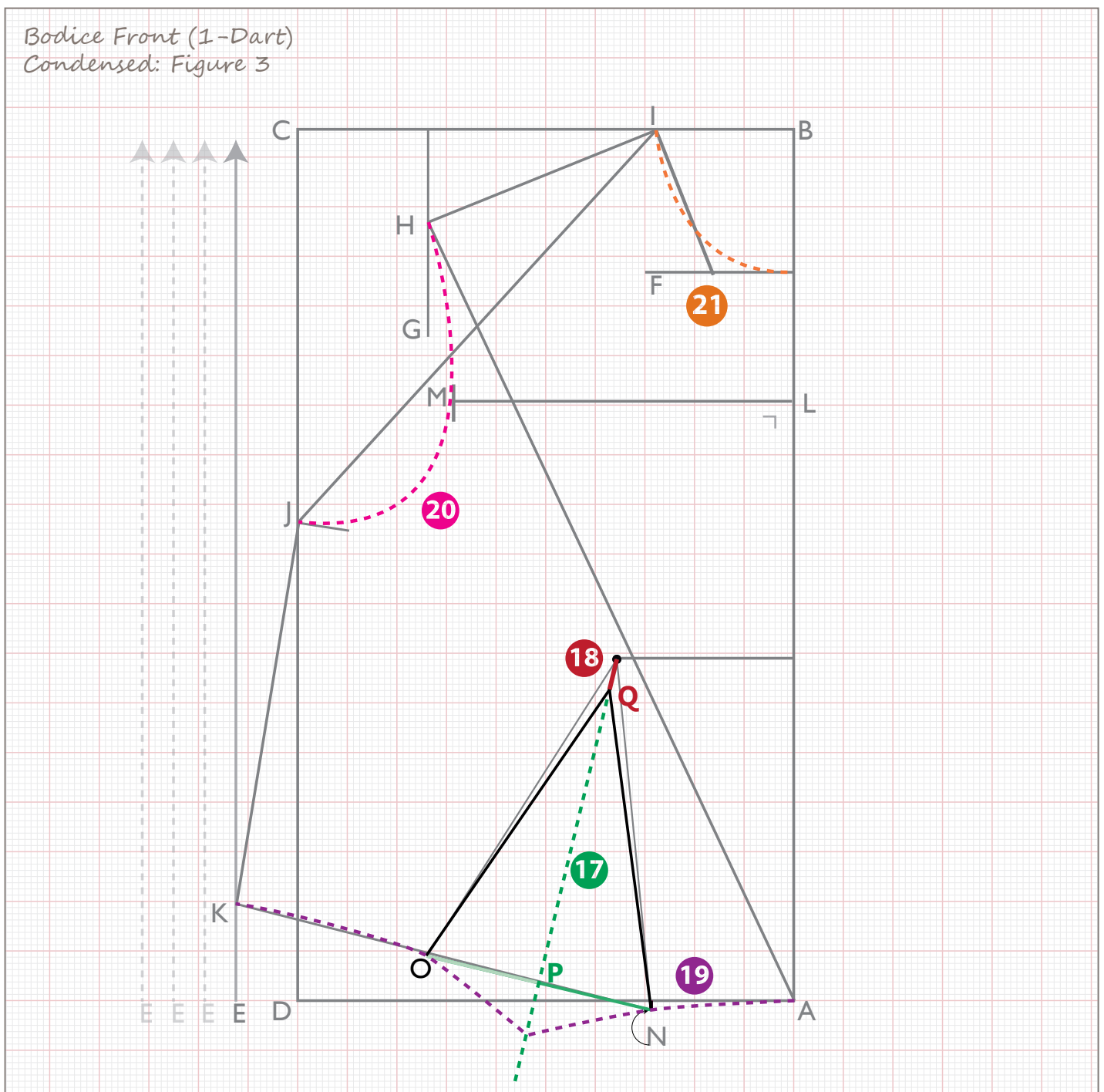


FIGURE 3:

- 17 MID DART LINE:** Measure to find the the mid dart point (half way between O and N) and mark it P. Draw a line from the Bust Point through this point (P) and continue that line for a couple of inches.
- 18 DART POINT:** From the Bust Point, measure 0.63 inches★ along the mid-dart line and mark it Q. Draw the dart legs from Q to O and from Q to N.
- 19 DRAW WAIST LINE:** Draw a curved line from A to N. Continue that curve to meet the mid-dart line. Draw a similar (but reflected) curve back to O, then finish the waist line to K. ★★
- 20 DRAW ARMHOLE:** Using a French Rule, draw a curve to touch points H, G, M and J. ★★★
- 21 DRAW NECKLINE:** Using a French Rule, draw a curve from I to where F touches the Centre Front. The curve will go in about 1/8 inch.

Your Block is finished: cut it out, label and notch it.

★ See Page 4 for all Comments and additional information.



COMMENTS

★ The bigger the bust, the larger the distance between Bust Point and Dart Point. Determine the distance for your figure when making your toile. See the table below for a rough guide.

★★ Read the article on the website about Curving the Waist

★★★ You may have to move the French Curve, draw another line and then blend the two lines.

Placement of Dart Point from Bust Point

Bust Size	30.5	31.5	32.5	34	36	38	40	42	44
Size <i>(consistent with Commercial Patterns)</i>	6	8	10	12	14	16	18	20	22
B-Cup	0.63	.063	0.75	0.75	0.75	1	1	1	1
C-Cup	1	1	1	1	1	1	1	1	1
D-Cup	1.25	1.25	1.25	1.25	1.25	1.25	1.25	1.25	1.25

Important!

After you have finished both the Bodice Front & Bodice Back, you will need to check that the armhole and necklines flow through from one to the other so there are smooth curves. See the page [Truing](#) on the website. This can be located through the Main Menu: [Other > Terminology > Truing](#).

You should also make a two-dart block from this one-dart block. See the instructions on the website in the article - [Pivoting Darts: Creating a Two-Dart Block from your One-Dart Block](#).